

# P4<sup>1</sup>



## 4-axes Wet Dental Mill

4 axes

3 pieces

6 tools

wet mill

Full dental CAD/CAM Solution



# P4<sup>1</sup>

## 4-axies Wet Dental Mill

P41 is a four-axis chairside grinding machine independently developed by Shenzhen UP3D Technology Co., Ltd. P41 adopts wet processing, vertical structure design, and it perfectly matches intelligent control system, energy saving 60~80% compared with traditional equipment, key control components adopts high-quality original parts, and screw rods, guide rails and other components are maintenance-free design which reducing trouble with professional maintenance of equipment.



### RESUME

Avoiding repeated work



### Built-in computer

Easy to use



Grinding 3 blocks  
at the same time



### Intelligent upgrade

Automatic calibration



Stable machine  
High precision



### Simple operation

Easy to learn

4-axies  
Wet Dental Mill

# P4<sup>1</sup>

01

## Small in size

space saving, to realize true “desktop” restoration.

All software and hardware are independently developed by Shenzhen UP3D Technology Co.,Ltd. with core technology, intelligent control system and a perfect combination of integrated structure.

02

## Powerful grinding machine

supports grinding of multiple materials and wide application on restorations.

It can process glass ceramics, titanium rods and other materials to support the processing of multiple types of restorations such as crown, inlay, veneer, and implant abutments.

03

## Automatic tool changer with 6 tool library

2 sets of different types of tools can be pre-placed

glass ceramic and titanium rod milling tools can be preset at the same time to improve production efficiency.

- intelligent control system and machine integration achieves high-degree automation
- Enable to one-click automatic calibration
- Small in size, Subvert the design of traditional large-scale milling machine
- Small and stable





A close-up photograph of a dental lathe tool cutting a titanium rod. The tool is a cylindrical metal piece with a sharp, pointed end, mounted on a larger metal structure. The rod is being cut, and the process is illuminated by a bright blue light. The background is dark and out of focus.

## Abutment

Prefabricated interface titanium rods material



A close-up photograph of a dental bridge being machined. The bridge is a pink, glass ceramic structure with three teeth. It is mounted on a metal lathe tool. The tool is cutting the bridge, and the process is illuminated by a bright blue light. The background is dark and out of focus.

## Bridge

Glass ceramic



A close-up photograph of a dental crown being machined. The crown is a pink, glass ceramic structure with a single tooth. It is mounted on a metal lathe tool. The tool is cutting the crown, and the process is illuminated by a bright blue light. The background is dark and out of focus.

## Crown

Glass ceramic

# P4<sup>1</sup>

## Veneer glass ceramic

Application

**1** Desktop scanner  
UP560



**2** Design software  
UPCAD



**3** Nesting software  
UPCAM



**4** Milling/Grinding  
P41



# P4<sup>1</sup>

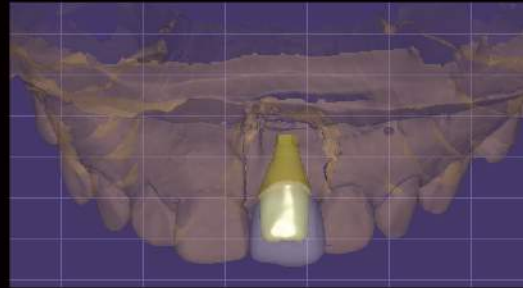
## Abutment+Glass ceramic crown

Application

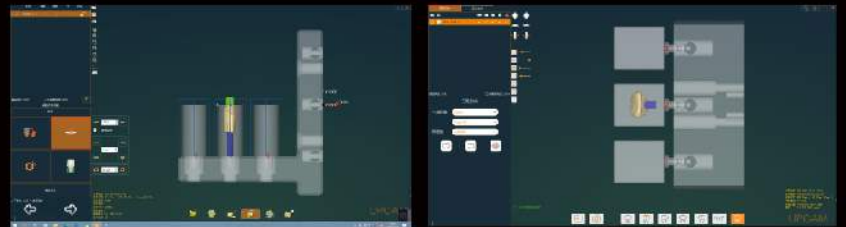
**1** Desktop scanner  
UP560



**2** Design software  
EXOCAD



**3** Nesting software  
UPCAM



**4** Milling/Grinding  
P41





Model	P41	Max spindle speed	60,000rpm
Dimension	520×420×560 (mm)	Max feed rate	3000mm/min
Weight	70Kg	Tool capacity	6
Input voltage	AC 100~235V、50~60Hz	Tools changing	Automatic (air pressure>0.45MPa)
Max power	0.9KW	Spindle cooling	air compression (air pressure0.25~0.35MPa)
Spindle power	0.8KW	Milling materials	Glass ceramic、Titanium bar
Axis	4 axis	Milling time	crown: Glass ceramic 20min
Milling range	X/Y/Z: 130/75/65.5mm A: ±360°		Veneer: Glass ceramic 18min
Milling mode	Wet milling	Tools diameter	2.5+1+0.6 (Glass ceramic)3+2+1.5 (Titanium rod)



Abutments



Veneers



Onlay



Crown



Bridge