

CONEXIS MOUTHVISION HD

Dental Intra-Oral Camera

2.0 Mega Pixels CMOS USB Dental Camera



User Guide

For best results, please read this manual carefully before using the camera!

TABLE OF CONTENTS

1.About your Conexis camera	1
2.Accessories	1
3.Camera functions explained	1
4.Assembling the camera	2
5.What's in the box	4
6.Software Installation	5
7.How to use the camera	7
8.Camera specifications	11
9.Troubleshooting	12
10.Notice	13

1. About your Conexis camera

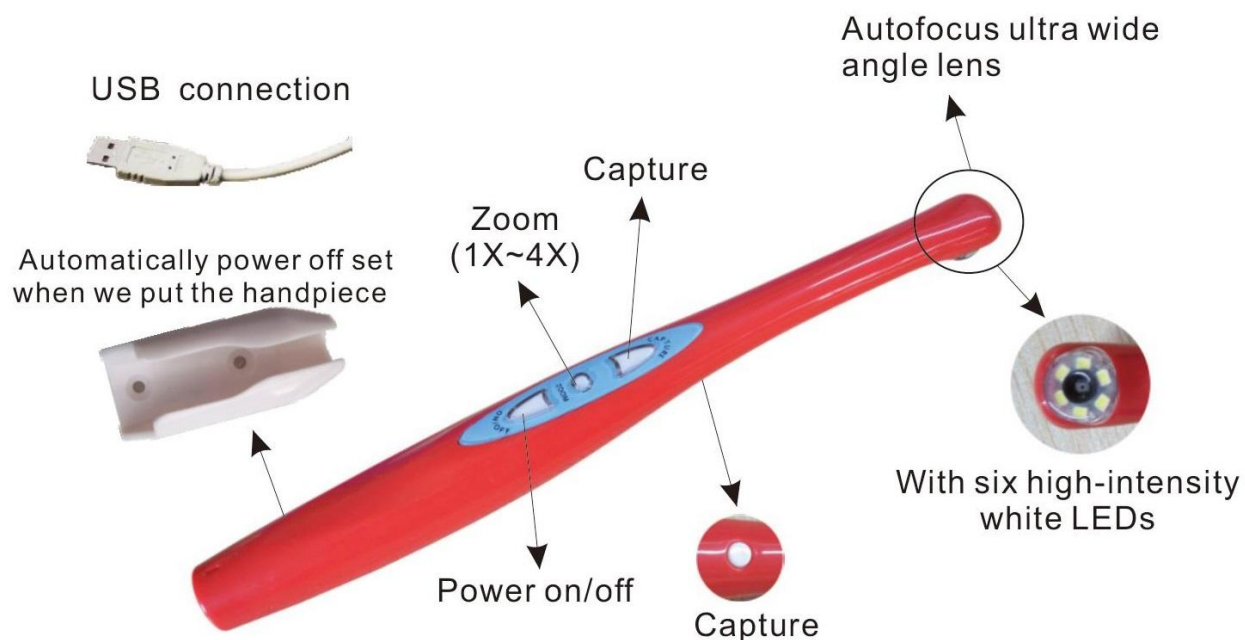
Dear Doctor

Thank you for purchasing a Conexis intra-oral camera. This product was designed for a busy dental practice, with a fixed focus lens that allows the user to concentrate on the patient and not on focusing.

2. Accessories

1. Handset	1 pc	2. Handset holder	1 pc
3. Cable	1 pc	4. Camera sheath	1 pcs
5. Software CD	1 pc	6. User manual	1 pc

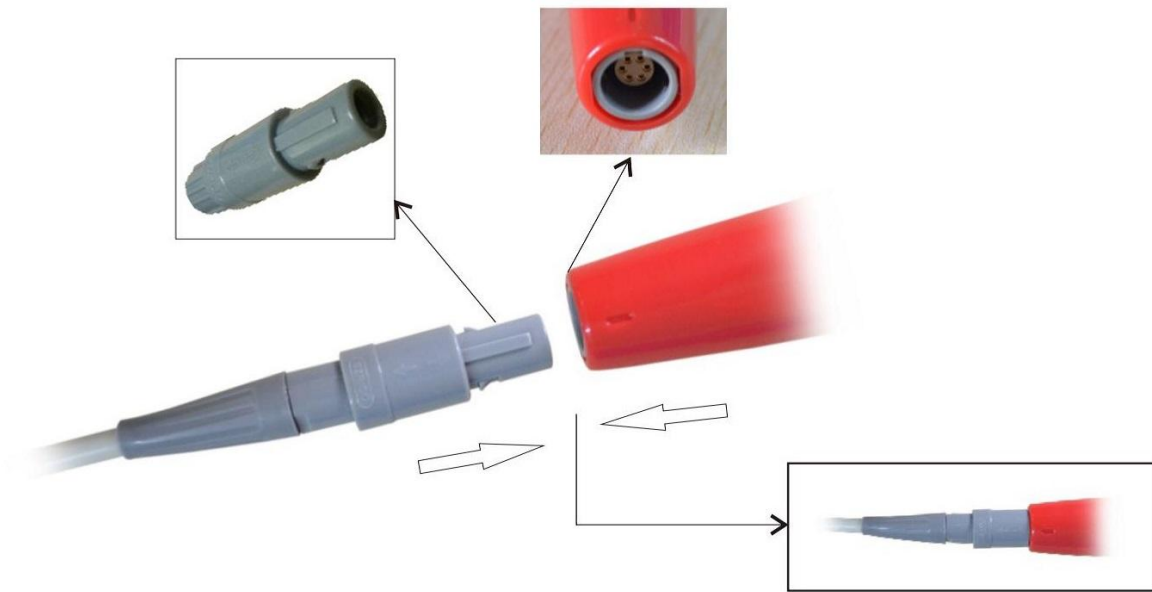
3. Camera functions explained



4. Assembling the camera

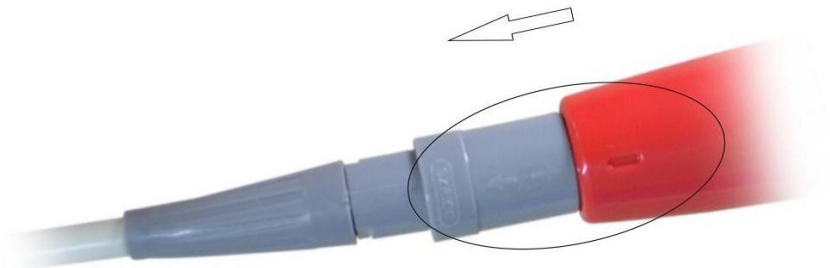
1. Assembly

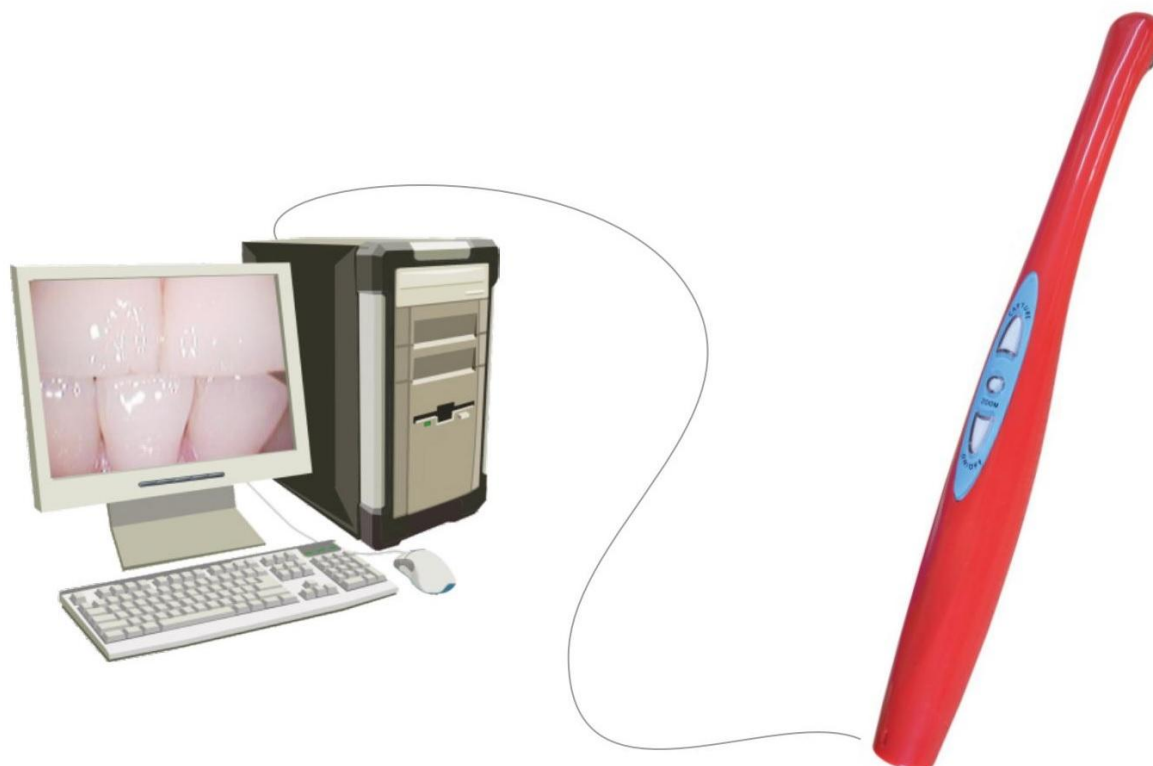
Follow the diagram below to insert the camera cable into hole at the back end of the camera.



2. Disassembly

Follow the diagram below to disassemble the camera for storage.





Connection schematic drawing

Remark:

The machine need to connect with USB interface behind the host computer motherboard based USB2.0 , please do not use front-end USB interface, because most of the host front-end is USB1.1, the picture image occur poor quality and unstable.

5.What's in the box



Handpiece



Software CD



Handset holder



Camera Sheath



Cable

6. Software Installation

Insert the disk. Setup should start automatically. If it doesn't, click **Start, Run**, and then enter **d:\setup\setup** at the command line (if your CD drive is a letter other than "d", use that letter instead) Please click Dental .

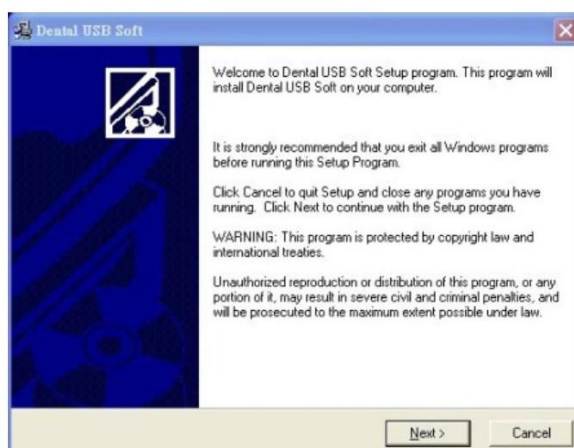
Back to the disk . click file "Dental USB " .
shown as below:



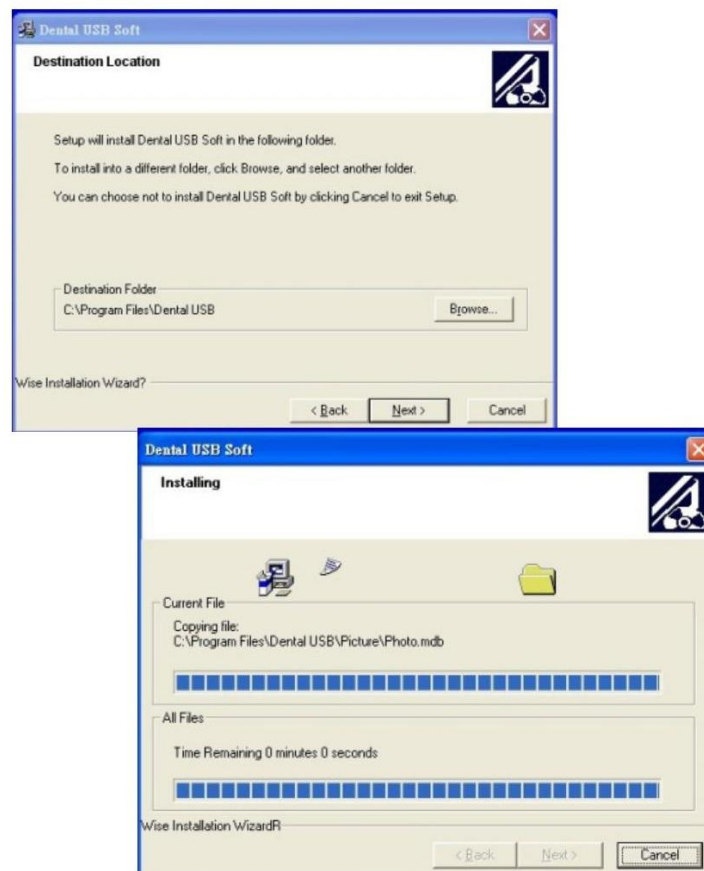
Then wait a while



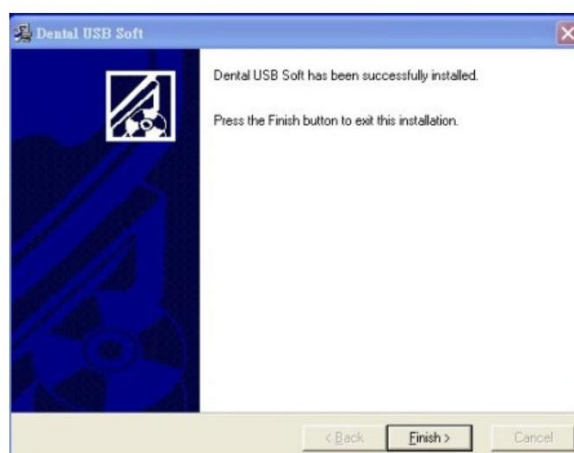
Click **Install** to begin the setup process.



Click Next

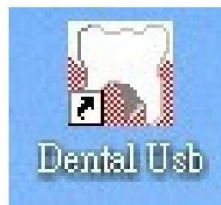


When the new video series is installed, click **Finish**

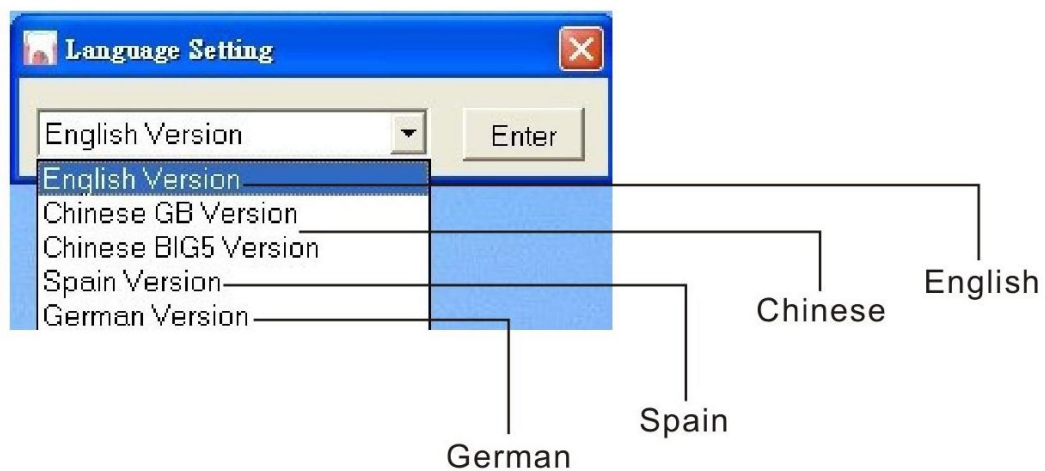


7.How to use the camera

After installation of driver and USB device, please back to the desktop, click “Dental Usb” to begin the software.



Choose start menu, select language and capture model.



Click icon to enter the system.



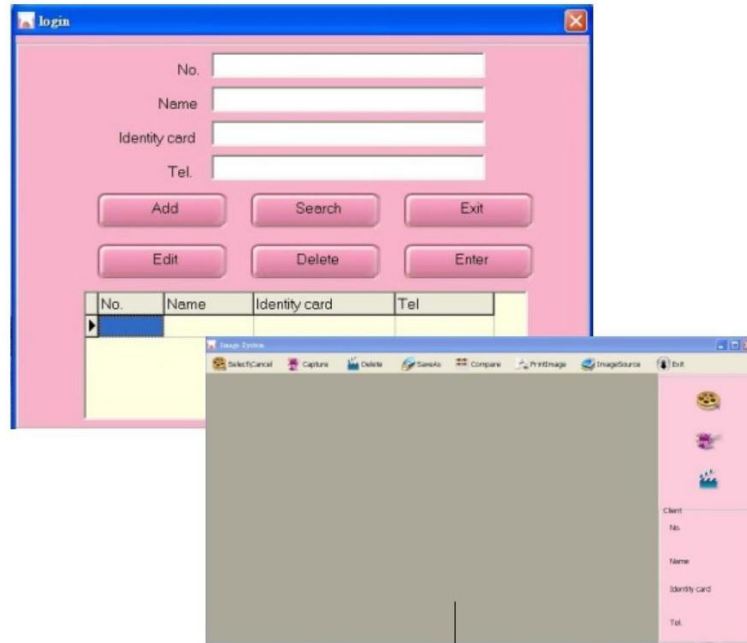
System into a user basic information registration, the establishment of user. click [ADD] to add the user, and then click [Enter] to enter the system.

A screenshot of a software window titled "login". The window has a pink background and a blue border with a close button in the top right corner. It contains four input fields labeled "No.", "Name", "Identity card", and "Tel.". Below these fields are six buttons: "Add", "Search", "Exit", "Edit", "Delete", and "Enter". At the bottom, there is a table with four columns: "No.", "Name", "Identity card", and "Tel.". The table has one empty row for data entry.

No.	Name	Identity card	Tel.

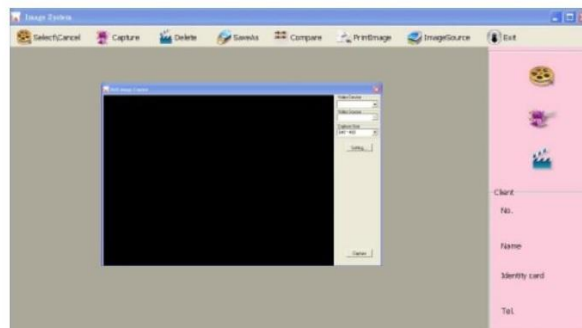
USER GUIDE

Note: Registered users can directly click [Search] to search, double-click selected user entry into the system; can also click the [Edit] to edit user or click [Delete] to delete the user.

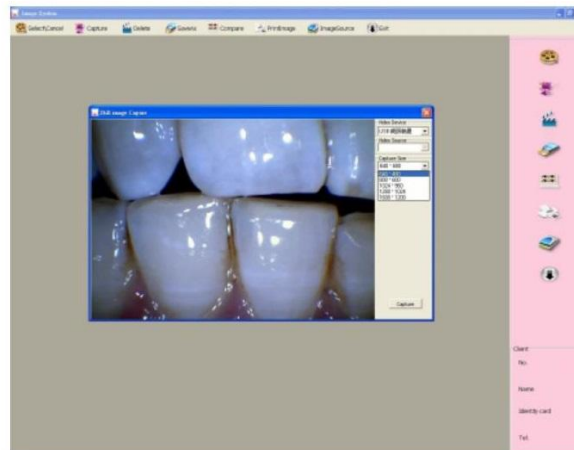


Press mouse right button in blank part could change language

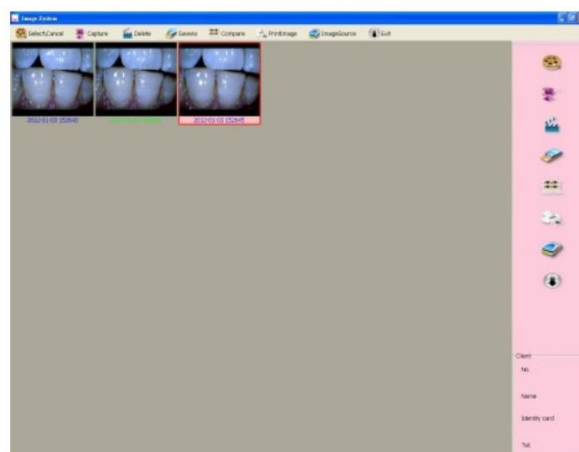
Before using if required to adjust the brightness, when the pop-up screen come out, then you click image [Setting] select the brightness you need. as shown below:



Capture: The intraoral camera pointed at your teeth, click capture button on the handpiece or click [Capture] button in the software to take pictures.



The image displayed on the software interface, Click “save as” button, the image will be saved to any location on your computer.



8.Camera specifications

Specification	CONEXIS MOUTHVISION HD Dental Intra-Oral Camera
Power	DC 5V±0.5 (Power provided by computer USB port)
Image sensor	1/4" CMOS
Image resolution	2.0 Mega pixels
Lamp	6 pcs white LED
Accumulation point	3~50mm
Photographing visual angle	105°
Length of handset	205mm
Lead	Length:2.5m connect port:5 pinhole
Weight of handset	30g

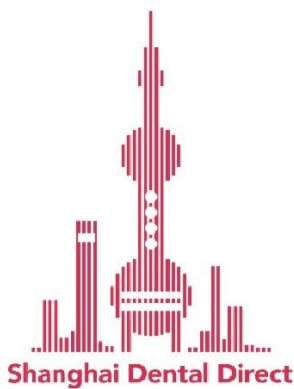
9.Troubleshooting

Follow the instructions below in case the camera fails to operate as expected. If you still have problems, contact us for further instructions.

Item	Problem	Solution
1	Camera turns on but there is nothing on the display	Check power supply socket connection
2	Computer/TV has no image	1.Check to see if the camera is connected with the computer properly 2.Verify that the camera drivers are properly installed
3	The image is slightly fuzzy	It is a normal when the camera is used the first time due to heat and will go away
4	The picture is not cleat after capturing an image	1.The camera must be held completely still when capturing an image. 2.You can try to capture again and again if your hand was not held still when capturing
5	The image that the camera produces has staining or blotches	1.Check the surface of the monitor to be sure it is clean. 2.Check the surface of the camera lens to be sure it is clean and use a cotton swab to clean the lens 3.Contact us if you cannot solve the issue by above instructions.

10. Notice

- Please read carefully notice hereinafter before you use the product, you should stow for later query.
- Product
 - When using this product please wear a camera sheath so as not to scratch the lens or water, or lens blur. The company is not responsible for it.
 - Please shutdown then plug the data lines, to ensure the normal use.
 - Please close the video window at first, and then close the power when you don't use the machine, to avoid the computer can't work.
 - Don't let sharp thing, metal or liquid into or touch signal tie-in in order to protect it.
 - Cut off power supply if you don't use it for a long time.
 - Don't discompose or dismantle any part of the product lest destroy product.
 - Don't compress it.
- Power supply
 - You should use appointed special transformer lest destroy product.
 - Cut off power supply if you don't use it for a long time.
 - You cannot use line of power supply, plug or socket when it was damaged.
 - Don't compress line of power supply or signal connection line.
 - Don't let line of power supply or signal connection line expose in gangway
 - lest line is trampled.
 - Don't put line of power supply or signal connection line in damp place.
- Surrounding environment
 - Put the product in dry and ventilated place.
 - Don't put the product in super-cooling, super-hot, super-damp, direct-irradiation, dusty place.



Shanghai Dental Direct Inc.

Address: 8 The Green Suite #7350, Dover DE 19901 USA

Tel: 1(800) 940-7924

Email: info@shanghaidentaldirect.com

Website: www.shanghaidentaldirect.com